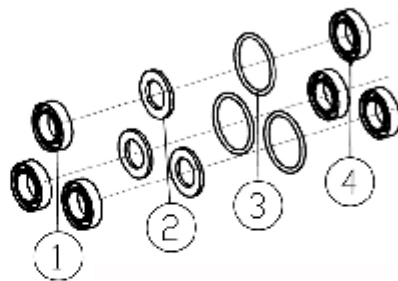


ECN# DC13-0085

FNA-GROUP <small>1763 INDUSTRIAL PARK, COVINGTON, LA 70022</small>		
ITEM OEM PUMP 3000PSI @ 4GPM VERTICAL WITH POWER BOOST		
SIZE C	DWG. NO. 510003	REV A
<small>8 CHS</small>		<small>SCALE: 1:1</small>
SHEET: 1 OF 3		

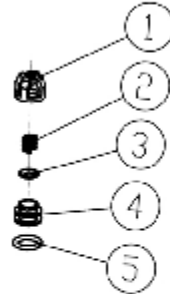
12 PART NO. 7105741

OIL SEAL KIT		
ITEM	QTY	DESCRIPTION
1	3	SEAL, OIL



14 PART NO. 7106627

WATER SEAL KIT		
ITEM	QTY	DESCRIPTION
1	3	HIGH PRESSURE SEAL
2	3	BACK RING
3	3	O-RING
4	3	LOW PRESSURE SEAL



16 PART NO. 7104223

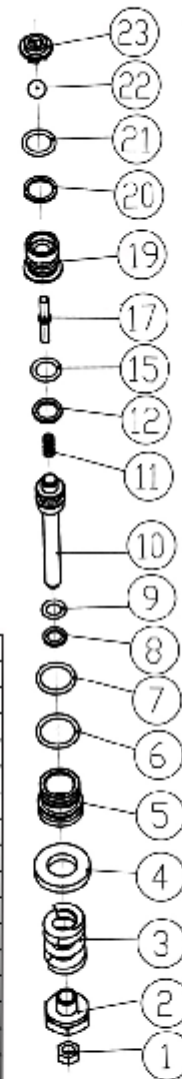
VALVE KIT		
ITEM	QTY	DESCRIPTION
1	6	VALVE CASE
2	6	SPRING
3	6	VALVE PLATE
4	6	VALVE SEAL
5	6	O-RING

18 PART NO. 7106628

BOOST VALVE KIT		
ITEM	QTY	DESCRIPTION
1	1	VALVE CASE
2	1	VALVE SPRING
3	1	VALVE POLE
4	1	VALVE PLATE
5	1	O-RING

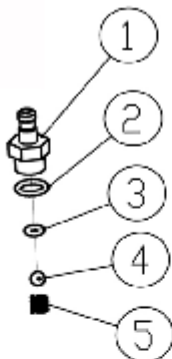
24 PART NO. 7104226

UNLOADER KIT		
ITEM	QTY	DESCRIPTION
1	1	NUT
2	1	ADJUSTING NUT
3	1	SPRING
4	1	SEATING RING
5	1	VALVE SHEATH
6	1	O-RING
7	1	O-RING
8	1	CHECKING RING
9	1	O-RING
10	1	VALVE POLE
11	1	SPRING
12	1	CHECKING RING
15	1	O-RING
17	1	PIN
19	1	UPPER SEAT
20	1	CHECKING RING
21	1	O-RING
22	1	STEEL BALL
23	1	BACK SEAT



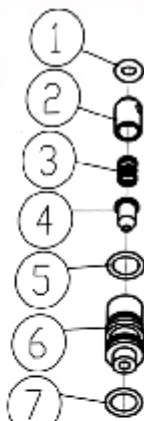
25 PART NO. 7104228

SOAP INJECTOR KIT		
ITEM	QTY	DESCRIPTION
1	1	HOSE BARB
2	1	O-RING
3	1	O-RING
4	1	STEEL BALL
5	1	SPRING



33 PART NO. 7106630

VENTURI TUBE KIT		
ITEM	QTY	DESCRIPTION
1	1	O-RING
2	1	CHECK VALVE CORE
3	1	CHECK VALVE SPRING
4	1	NOZZLE
5	1	O-RING
6	1	VENTURI TUBE
7	1	O-RING



ECN# DC13-0085

FNA GROUP 1700 B. BLVD. CHICAGO, ILL. 60608-1000		
TITLE: OEM PUMP 3000PSI @2.4CPM VERT. CAL WITH POWER BOOST		
REV: C	DWG. NO: 510003	REV: A
SHEET: 1		SHEET: 2 OF 3

510003 PUMP EXPLOSION DRAWING PARTS LIST

ITEM	PART NO.	PART NAME	QTY PER PUMP	COMMENT
1	7106631	Case	1	
2	7106632	Oil seal	1	
3	7106633	Thrusting Bearing 2	1	
4	7106634	Wobble Plate	1	
5	7106635	Thrusting Bearing 1	1	
6	7106636	Clip	3	
7	7106637	Spring Base	3	
8	7106638	Plunger	3	
9	7106639	Spring	3	
10	7106640	O-Ring	1	
11	7106641	Plunger Base	1	
12	7106741	Oil Seal	3	Oil Seal Kit
13	7106642	Back Ring	3	
14	7106627	High Pressure Water Seal Back Ring O-Ring Low Pressure Water Seal	3	Water Seal Kit
15	7106643	Back Ring	3	
16	7104223	Valve Case Spring Valve Plate Valve Seat O-Ring	6	Valve Kit (INLET AND OUTLET)
17	7106644	O-Ring	1	
18	7106628	Boost Valve Case Boost Valve Spring Boost Valve Plate Boost Valve Plate O-Ring	1	Boost Valve Kit
19	7106645	O-Ring	3	
20	7106646	Plug	3	
21	7106647	Plug	2	
22	7106648	Screw	3	
23	7106649	Screw	3	

510003 PUMP EXPLOSION DRAWING PARTS LIST

ITEM	PART NO.	PART NAME	QTY PER PUMP	COMMENT
24	7104225	Nut	1	Unloader Kit
		Adjusting Nut		
		Spring		
		Sealing Ring		
		Valve Sheath		
		O-Ring		
		O-Ring		
		Checking Ring		
		O-Ring		
		Valve Pole		
		Spring		
		Checking Ring		
		O-Ring		
		Pin		
Upper Seat				
Checking Ring				
O-Ring				
Steel Ball				
Back Seat				
25	7104226	Nozzle	1	Soap Injector Kit
		O-Ring		
		O-Ring		
		Steel Ball		
Spring				
26	7106650	Venturi Tube Back Ring	1	
27	7106651	O-Ring	1	
28	7106652	O-Ring	1	
29	7106653	Inlet Connector	1	
30	7106654	Nut	1	
31	700123	Filter Gasket	1	
32	7106655	U-Pin	1	
33	7106630	O-Ring	1	Venturi Tube Kit
		Checking Valve Core		
		Checking Valve Spring		
		Nozzle		
		O-Ring		
Venturi Tube				
O-Ring				
34	7106656	Pump Head	1	
35	7101350	Thermal Relief Valve	1	

ECN# DC13-0085

FNA-GROUP <small>INDUSTRIAL PUMP COMPANY, INC.</small>		
OEM PUMP 3000PSI @ 7 GPM VERTICAL WITH POWER BOOST		
SIZE C	DWG. NO. 510003	REV A
SHEET: 3 OF 3		REV: 11